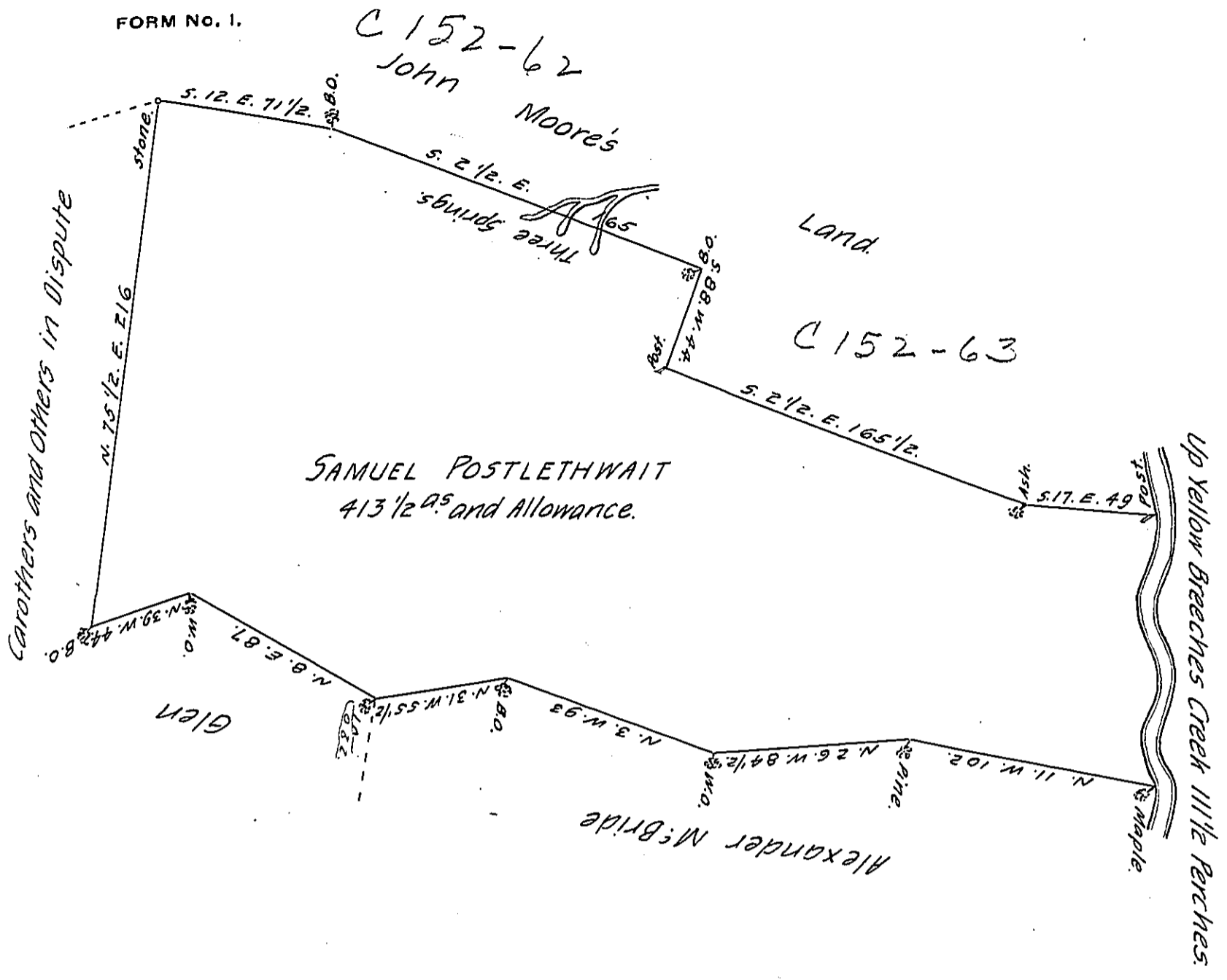


FORM NO. 1.



The Draught of a Tract of Land Situate in Dickinson Township, Cumberland County. Containing Four Hundred and thirteen and one half Acres and Allowance of Six $\frac{7}{8}$ Cent for Roads &c. Surveyed for Samuel Postlethwait the 23rd Day of June 1785; in Pursuance of a Warrant from the Supreme Executive Council of the Common Wealth of Pennsylvania, bearing Date at Philad^a the 31st Day of May A. D. 1785.

J. Spoz. Lyon, D. S.

To John Lukens, Esq. }
 Surveyor Gen^l } E. G.

IN TESTIMONY that the above is a copy of the original remaining on file in the Department of Internal Affairs of Pennsylvania, made conformably to an Act of Assembly approved the 16th day of February, 1833, I have hereunto set my Hand and caused the Seal of said Department to be affixed at Harrisburg, this seventeenth day of April 1906.

Isaac B. Brown
 Secretary of Internal Affairs.